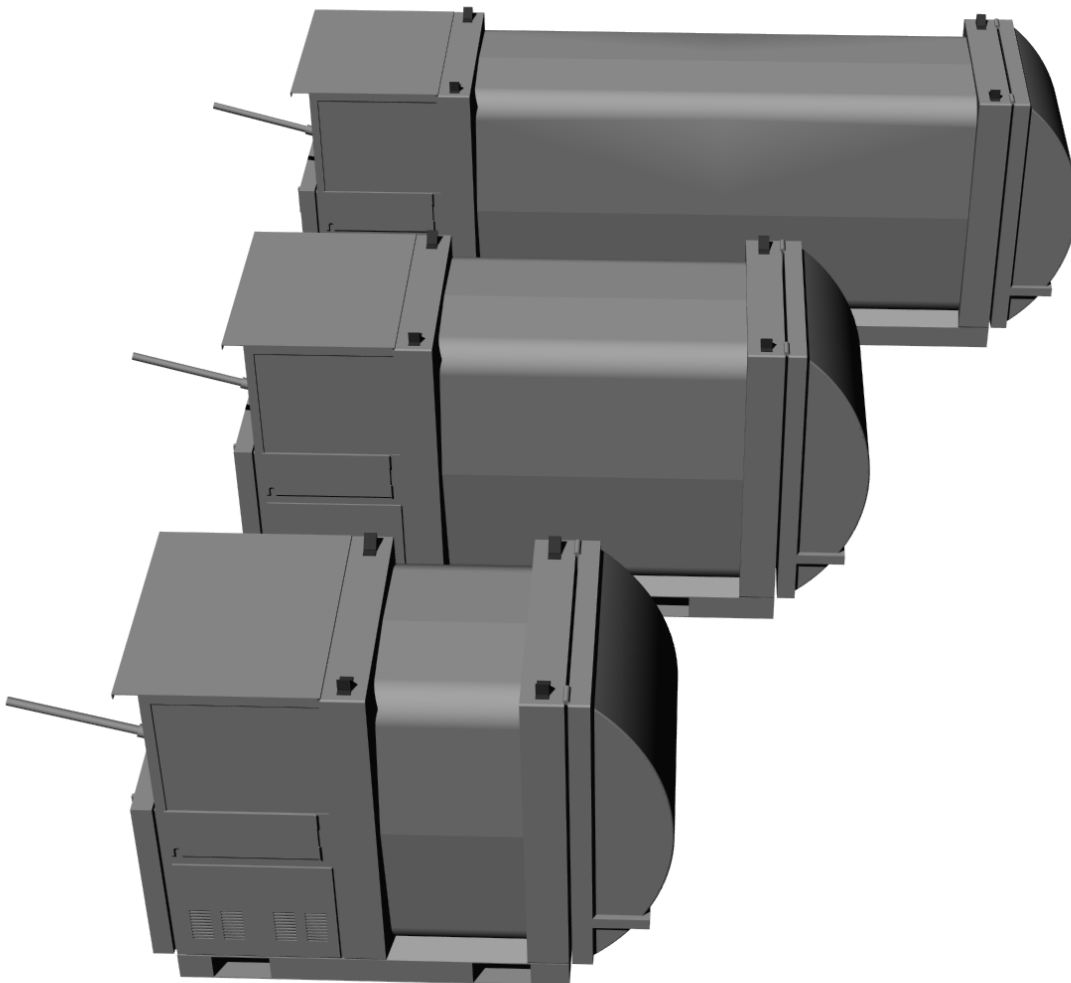


# Module 1: Screw compactor

On-site waste compaction markedly increases the capacity of the collection point. Screw compactors – which are available in three sizes – will replace up to 25 conventional containers.



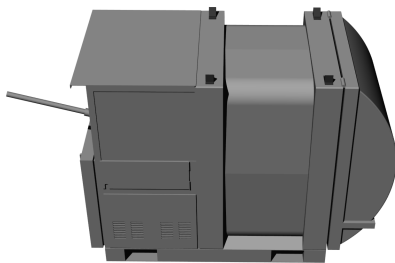
# Air needs to be removed: Compaction of waste directly at the collection point

Most of us are familiar with the sight of overflowing containers and collection points piled high with waste. In spite of the large volume of waste that collects locally, in terms of weight there is often only a small amount of waste present. The local compaction of wastes by screw compactors, where the waste volume already becomes reduced on site by a factor of 5, offers an elegant solution.

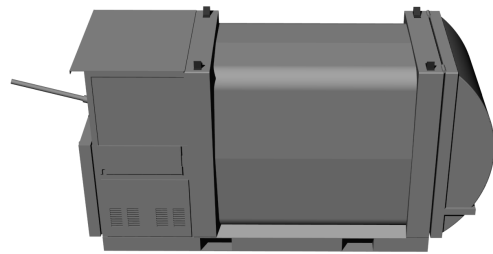
Three different sizes of compactor container, container lengths of 2.5 m, 3.5 m and 5.0 m, provide an ideally-sized system for every collection point and make the best

possible use of available space. System-Alpenluft screw compactors have also been designed to be entirely self contained; they can be used above ground, but also underground in closed and aesthetically elegant collection points.

Fork lift receptacles in the bottom section, as well as an eye for hooks on the container roof guarantee simple handling by a forklift truck, but also by conventional lorry-mounted cranes.



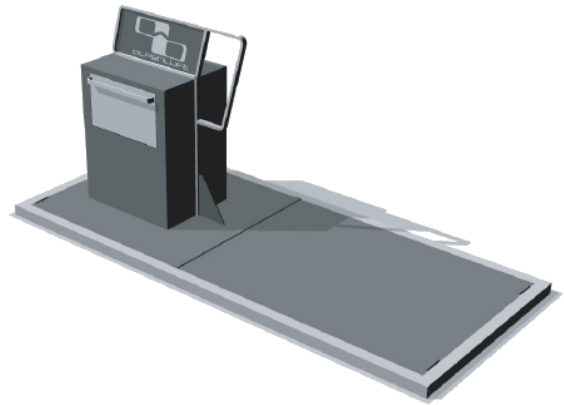
Screw compactor S, 2.5 m



Screw compactor M, 3.5 m



Screw compactor L, 5 m



Screw compactor positioned underground with chute

## Module 1 in numbers

### Screw compactor "S"

Length	2.50 m
Width	1.20 m
Height	1.80 m
Waste amount	1.5 t

### Screw compactor „M“

Length	3.50 m
Width	1.20 m
Height	1.80 m
Waste amount	2.2 t

### Screw compactor „L“

Length	5.00 m
Width	1.20 m
Height	1.80 m
Waste amount	3 t