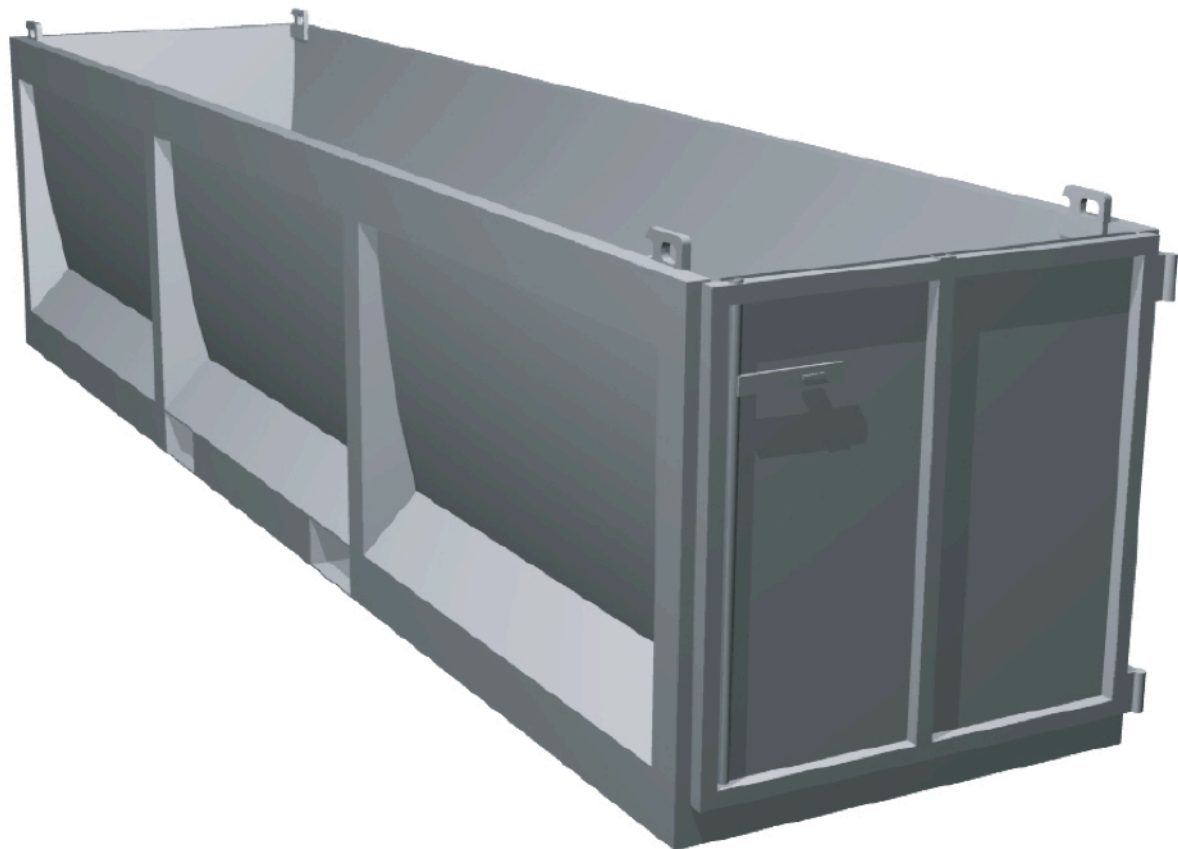


Module 2: Building rubble and bulky goods skips

Skips for the disposal of building rubble and bulky goods. In either an open or closed design with volumes of 5 m³ and 10 m³.



Highly versatile and able to accept everything

We offer two different skips for the disposal of building rubble, paper, cardboard, wood and other bulky materials.

The open skip with a holding capacity of 5 m³ is suited to the transport of particularly bulky materials and can be optionally loaded from the top or through a panel at the end. Lugs as well as a locking bolt allow empty containers to be stacked. In addition, the integral fork lift receptacles provide an extremely fast and practical method of placing the skip onto the vehicle.

With a useable volume of 10 m³, the closed skip which can be walked on is particularly suited to the collection of recyclable materials from households such as paper, cardboard and glass. Where desired, the top section can also be adapted to accommodate special applications, e.g. glass being thrown in from the side.

The closed 10 m³ skip can also be stacked and, thanks to its integral fork lift receptacles, exchanged in a matter of seconds.



Building rubble skip 5 m³, stackable, open



Building rubble skip 5 m³ on vehicle



Bulky goods skip 10 m³, stackable, closed



Bulky goods skip 10 m³ on vehicle.

Module 2 in numbers

Skip 5 m³ open

Length	5.00 m
Width	1.20 m
Height	1.21 m
Laden weight	5 t

Skip 10 m³ closed

Length	5.00 m
Width	1.20 m
Height	2.16 m
Laden weight	4.5 t